



Role Title	Forensic Collision Investigator ADVANCED	Reporting to	Forensic Collision Investigation Supervisor
Section	Forensic Collision Investigation Unit (FCIU)	District/Department	Regional Scientific Support Services (RSSS)
Tenure		Rank/Grade	SO2

Part A – JOB DESCRIPTION

Overall purpose of role	To provide an expert Forensic Collision Investigation service, compliant with current legislative and regulatory standards.
--------------------------------	---

Key outputs for role –

1. Lead by example and behave in line with the Police Code of Ethics ensuring that the organisation's values and behavioural expectations are clearly understood and considered by managers, officers and staff in their decision making and actions; reinforcing and influencing them through all interactions and processes
2. Fully evaluate collision scenes (and other incidents as required) and develop an evidence recovery strategy that meets the investigative requirements, identifying relevant forensic evidence and topography, using a full range of forensic collision investigative techniques to accurately record and recover the relevant items and information.
3. Photograph and forensically map the scene using a variety of methods and equipment to prepare evidential scale plans and other visual representations
4. Provide analysis of vehicle borne data and conduct specialist technical and mechanical examinations of all type of vehicle under relevant legislation to identify offences, substantiate allegations of mechanical failure and ensure that procedures are conducted in line with national requirements.
5. Produce reconstruction reports ensuring by applying correct scientific principles and ensure conclusions reached are valid and supported by the available evidence.
6. Provide an expert witness service within your capability and expertise. Advise and liaise with key parties to ensure a professional thorough, investigation whilst maintaining the highest standards and ensuring (unbiased) expert evidence is provided from initial scene capture through to expert testimony and cross examination in court, in order to support the criminal justice and coronial systems.
7. Ensure compliance with the Forensic Science Regulator's codes, ISO standards, Criminal and Civil Procedure Rules to provide a high quality of service.
8. Maintain competence in accordance with ISO and regulatory standards and evidence continued professional development to NPCC requirements.
9. Assist and mentor other colleagues with scene attendance and investigations, peer reviewing work to ensure standards of reporting are maintained.
10. Critically review reports, confirming that correct scientific principles and conclusions reached are valid and supported by available evidence.

Dimensions (Financial/Statistical/Mandates/Constraints/No. of direct reports)

- FCI service is maintained 24/7 across the region through a designated shift pattern including weekend working and standby duty as necessary.
- Approximately 400-500 collision scenes per year are attended by FCIs.

Work/Business contacts

Internal: All ranks of Police officers and Police Staff across multiple force areas.

External: Members of public and outside agencies, such as Vehicle Inspectorate, Trading Standards, Insurance Companies and Solicitors, Crown Prosecution Service, Coroners, Barristers. Link closely with National and Regional Senior Collision Investigators.

Expertise in Role Required (At selection - Level 1)

Essential or Desirable

- Satisfies all essential requirements of expertise in role at level 1 & 2 from the Entry Level Forensic Collision Investigator role profile.
- Demonstrate qualities to be a mentor to other colleagues
- Demonstrate qualities to critically review FCI reports

Essential

Essential

Essential

Other (Physical, mobility, local conditions)

- Ability to contribute equitably to the designed shift pattern and standby duty as required
- Holds a current full UK/European driving licence and demonstrate ability to pass a police advanced driving course
- Hold or demonstrate ability to obtain motorcycle and vocational driving licences
- Emotional resilience and ability to deal with the distressing situations
- Willingness and ability to work in physically challenging environments e.g. walking long distances or over uneven ground, carrying awkward or heavy items over protracted periods of time. Inclement weather conditions and exposure to potentially hazardous substances (including bodily fluids and bodies).
- Attend non-police premises, and other locations where directed and agreed to locally, to examine vehicles.
- Due to the nature of the role, must provide biometric samples (fingerprints and DNA) as required to ensure ongoing inclusion on the relevant elimination databases for policing purposes.

Essential

Essential

Essential

Essential

Essential

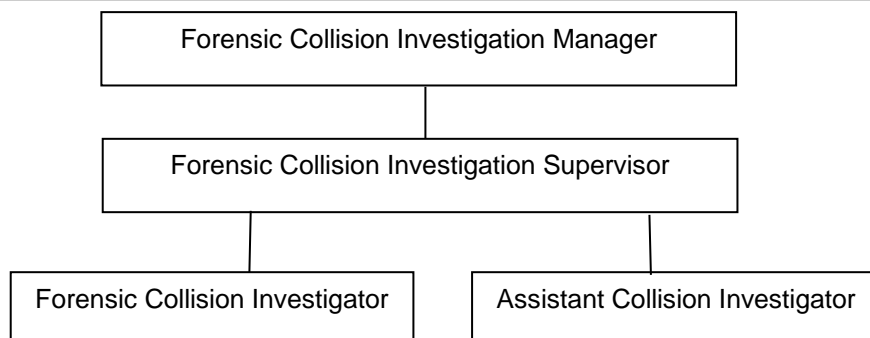
Essential

Essential

Expertise in Role - After initial development - Level 2

- Holds a CertHE (or equivalent) in Forensic Collision Investigation within 2 years of attaining UCPD (or equivalent)
- Holds motorcycle and vocational driving licences.
- Has developed an advanced level of expertise and used as an expert source of advice in the investigation of collisions and examination of vehicles.
- Has acted as a mentor for the development of other colleagues.

Structure



PART B – COMPETENCIES & VALUES

Competency and Values Framework –

http://www.college.police.uk/What-we-do/Development/competency-and-values-framework/Documents/Competency-and-Values-Framework-for-Policing_4.11.16.pdf

Level 1- Practitioner

PART C - DEVELOPMENT OF ROLE

Expertise in Role (Advanced - Level 3)

- Demonstrate significant experience of investigating collisions of various complexities and involving all types of vehicles and given expert evidence at court on numerous occasions.
- Demonstrates a detailed knowledge and understanding of ISO accreditation requirements.

PART D - ACCESS & VETTING

Standard IT Access	Default
Police Building (Perimeter and Zone access)	Perimeter Access to Police Buildings where based
Vetting Level	Management Vetting
Date accepted as a role profile	29/11/18