

ROLE PROFILE

Role Title	Line Pilot (Fixed Wing)	Reporting to	Senior Pilot (Fixed Wing)
Section	NPAS	District/Department	NPAS
Tenure		Grade	POC

Part A – JOB DESCRIPTION

Overall purpose of role	To fly as a fixed wing Line Pilot under Visual and Instrument Meteorological Conditions in day and night operations in accordance with the approved Flight Time Limitation (FTL) scheme providing effective aerial support to the ground based officers and in doing so improve operational response to incidents within the highest safety standards.
--------------------------------	--

Key outputs for role –	
	<ol style="list-style-type: none"> 1. Lead by example and behave in line with the Police Code of Ethics ensuring that the force values and behavioural expectations are clearly understood and considered by managers, officers and staff in their decision making and actions; reinforcing and influencing them through all interactions and processes. 2. To fly as a rostered Line Pilot in accordance with the approved Flight Time Limitation (FTL) scheme providing effective aerial support to ground based officers and in doing so improve operational response to incidents within the highest safety standards. 3. Undertakes necessary daily pre-flight inspections of the aircraft and related equipment and conducts pre-flight briefings, in accordance with the NPAS SOP's Local Staff Instructions, Flying Staff Instructions, and the Operations Manual. 4. Ensure the safe, efficient and effective operation of the aircraft is in accordance with the highest level of safety standards and with Civil Aviation Authority and the Operations Manual promoting a Just Culture throughout the pilot cadre. 5. Provides advice and assistance in the planning of police operations and functions which require the services of the NPAS, and provides debriefings, as appropriate. 6. Assists with the cleaning, fuel testing and analysis, ground handling and refuelling of the aircraft as appropriate. 7. Assists other members of the crew and other personnel at the base, on the ground and at the scene of an incident when operational needs dictate. 8. Liaises with maintenance engineers and assists as necessary during rostered duty time to ensure the serviceability of the aircraft. 9. Undertakes any aviation related task, as allocated directly or indirectly by the Base Manager, Senior Pilot Fixed Wing, Assistant Operations Director or Head of Flight Operations. 10. Performs such other duties as reasonably correspond to the general character of the post and are commensurate with its level of responsibility.

Dimensions (Financial/Statistical/Mandates/Constraints/No. of direct reports)
<ul style="list-style-type: none"> • CAA Personal Compliance (Ensure own licences, medical, line, base, emergency and safety equipment and other periodic checks required by the Operations Manual are adhered to and in date).

- Human Factors, aircraft worthiness and local environmental conditions (Impacts on deployment of aircraft)
- Flight Time Limitation (FTL) scheme including Working Time Records
- Civil Aviation Regulations, including NPAS Operations Manual and ATO Provisions
- NPAS SOPS , Safety Management System and 'Just Culture' principles

Work/Business contacts

Internal: Other pilots, Senior Pilot Fixed Wing, Base Manager, Assistant Operations Director, Tactical Flight Officers, Head of Flight Operations, maintenance organisations, Head of Technical Services, other Senior Leaders

External: Contracted maintenance organisations, contracted pilots at other bases, other aviation operations and organisations.

Expertise in Role Required (At selection - Level 1)

**Essential
or
Desirable**

- | | |
|---|-----------|
| • Must possess, as a minimum, a current EASA/CAA Commercial Pilots Licence (Aeroplanes) with RT licence, English Language Proficiency Level 6 and a Class One Medical (no OML). | Essential |
| • Hold a valid Multi Engine Type or Class Rating (Single Pilot Aircraft) | Essential |
| • Hold a valid single pilot Multi Engine Instrument Rating with a performance based navigation endorsement (IR-SP-ME class + PBN) | Essential |
| • Must be able to demonstrate fixed wing experience with a total minimum time of 1300 hours of which, 500 hours pilot in command (PIC) of single pilot aircraft (SPA) fixed wing, 100 hours total flying time IFR, 50 hours night of which 25 hours to be PIC and be in current multi-engine practice | Essential |
| • Ability to work effectively as part of a team. | Essential |
| • Ability to communicate clearly and concisely to team members while carrying out other tasks. | Essential |
| • Previous flying experience in a police role | Desirable |

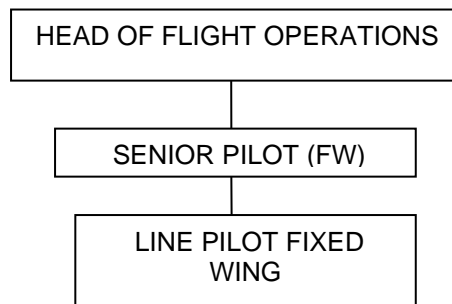
Other (Physical, mobility, local conditions)

- | | |
|--|-----------|
| • Must be flexible and able to work at other locations if required, usually with notice. | Essential |
| • A full driving licence | Essential |
| • Role is subject to ongoing Health surveillance commencing prior to appointment in line with HSE guidance/legislation | Essential |

Expertise in Role - After initial development - Level 2

- Flying experience in a police role

Structure



PART B – COMPETENCIES & VALUES

Competency and Values Framework –

http://www.college.police.uk/What-we-do/Development/competency-and-values-framework/Documents/Competency-and-Values-Framework-for-Policing_4.11.16.pdf

Level 2- Supervisor/Middle Manager

PART C - DEVELOPMENT OF ROLE

Expertise in Role (Advanced - Level 3)

- Ability to undertake flying management roles e.g. -Senior Pilot Fixed Wing

PART D - ACCESS & VETTING

Standard IT Access	Default
Police Building (Perimeter and Zone access)	Access to all NPAS buildings
Vetting Level	Recruitment Vetted
Date accepted as a role profile	9 th February 2021