



|                   |   |                            |  |
|-------------------|---|----------------------------|--|
| <b>Role Title</b> | Forensic Collision Investigator<br>ENTRY        | <b>Reporting to</b>        | Forensic Collision Investigation<br>Supervisor |
| <b>Section</b>    | Forensic Collision Investigation<br>Unit (FCIU) | <b>District/Department</b> | Regional Scientific Support Services<br>(RSSS) |
| <b>Tenure</b>     |   | <b>Rank/Grade</b>          | SO1  |

## Part A – JOB DESCRIPTION

|                                |   |
|--------------------------------|---|
| <b>Overall purpose of role</b> | To provide an expert Forensic Collision Investigation service, compliant with current legislative and regulatory standards. |
|--------------------------------|---|

### Key outputs for role –

1. Lead by example and behave in line with the Police Code of Ethics ensuring that the organisation's values and behavioural expectations are clearly understood and considered by managers, officers and staff in their decision making and actions; reinforcing and influencing them through all interactions and processes
2. With support of another colleague until deemed competent fully evaluate collision scenes (and other incidents as required) and develop an evidence recovery strategy that meets the investigative requirements, identifying relevant forensic evidence and topography, using a full range of forensic collision investigative techniques to accurately record and recover the relevant items and information.
3. With support of another colleague until deemed competent photograph and forensically map the scene, using a variety of methods and equipment to prepare evidential scale plans and other visual representations.
4. With support of another colleague until deemed competent provide analysis of vehicle borne data and conduct specialist technical and mechanical examinations of all type of vehicle under relevant legislation to identify offences, substantiate allegations of mechanical failure and ensure that procedures are conducted in line with national requirements.
5. With support of another colleague until deemed competent produce reconstruction reports ensuring by applying correct scientific principles and ensure conclusions reached are valid and supported by the available evidence.
6. Provide an expert witness service. Initially under supervision advise and liaise with key parties to ensure a professional thorough, investigation whilst maintaining the highest standards and ensuring (unbiased) expert evidence is provided from initial scene capture through to expert testimony and cross examination in court, in order to support the criminal justice and coronial systems.
7. Ensure compliance with the Forensic Science Regulator's codes, ISO standards, Criminal and Civil Procedure Rules to provide a high quality of service.
8. Achieve and maintain competence in accordance with ISO and regulatory standards and evidence continued professional development to NPCC requirements.

### Dimensions (Financial/Statistical/Mandates/Constraints/No. of direct reports)

- FCI service is maintained 24/7 across the region through a designated shift pattern including weekend working and standby duty as necessary.
- Approximately 400-500 collision scenes per year are attended by FCIs.

### Work/Business contacts

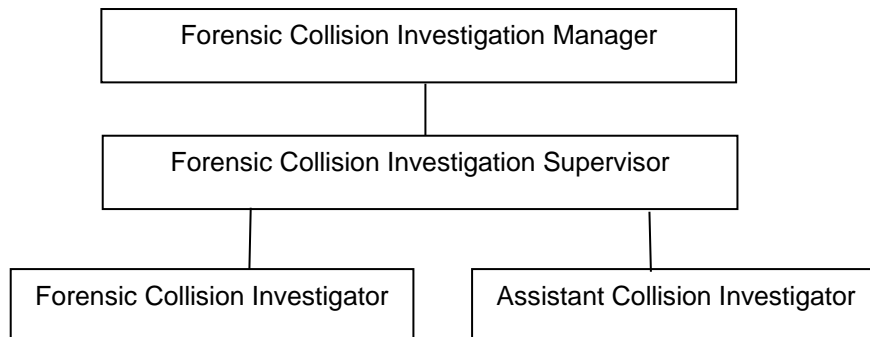
**Internal:** All ranks of Police officers and Police Staff across multiple force areas.

**External:** Members of public and outside agencies, such as Vehicle Inspectorate, Trading Standards, Insurance Companies and Solicitors, Crown Prosecution Service, Coroners, Barristers. Link closely with National and Regional Senior Collision Investigators.

| <b>Expertise in Role Required (At selection - Level 1)</b>   |  | <b>Essential or Desirable</b> |
|--|--|-------------------------------|
| <ul style="list-style-type: none"> <li>• Sound knowledge of maths and physics to demonstrate ability of attaining a UCPD (or equivalent) in Forensic Collision Investigation within 3 years.</li> <li>• Demonstrate ability to attain a CertHE (or equivalent) in Forensic Collision Investigation within 2 years of attaining UCPD (or equivalent).</li> <li>• Good working knowledge of modern motor technology, equipment and products to demonstrate ability of attaining a level 3 City &amp; Guilds (or equivalent) in vehicle mechanics within 5 years.</li> <li>• Good working knowledge of Microsoft Word and Excel software to produce concise technical reports, calculations and other documents.</li> <li>• Excellent written and oral communication skills in order to communicate ideas and information effectively and to a wide range of audiences.</li> <li>• Experience of survey methods, and working with CAD software.</li> <li>• Experience of maintaining and testing a wide range of electrical and mechanical systems.</li> <li>• Member of a relevant professional body.</li> </ul>     |  | Essential                     |
|  |  | Essential                     |
|  |  | Essential                     |
|  |  | Essential                     |
|  |  | Essential                     |
|  |  | Desirable                     |
|  |  | Desirable                     |
|  |  | Desirable                     |
| <b>Other (Physical, mobility, local conditions)</b>  |  |                               |
| <ul style="list-style-type: none"> <li>• Ability to contribute equitably to the designated shift pattern and standby duty as required.</li> <li>• Holds a current full UK/European driving licence and demonstrate ability to pass a police advanced driving course.</li> <li>• Hold or demonstrate ability to obtain motorcycle and vocational driving licences.</li> <li>• Emotional resilience and ability to deal with distressing situations.</li> <li>• Willingness and ability to work in physically challenging environments e.g. walking long distances or over uneven ground, carrying awkward or heavy items over protracted periods of time. Inclement weather conditions and exposure to potentially hazardous substances (including bodily fluids and bodies).</li> <li>• Attend non-Police premises, and other locations where directed and agreed to locally, to examine vehicles.</li> <li>• Due to the nature of the role, must provide biometric samples (fingerprints and DNA) as required to ensure ongoing inclusion on the relevant elimination databases for policing purposes.</li> </ul> |  | Essential                     |
|  |  | Essential                     |
|  |  | Essential                     |
|  |  | Essential                     |
|  |  | Essential                     |
|  |  | Essential                     |
|  |  | Essential                     |
|  |  | Essential                     |

| <b>Expertise in Role - After initial development - Level 2</b>   |
|--|
| <ul style="list-style-type: none"> <li>• Holds a UCPD (or equivalent) in Forensic Collision Investigation and deemed competent to attend collision scenes single crewed.</li> <li>• Holds a level 3 City and Guilds (or equivalent) in vehicle mechanics and deemed competent in basic vehicle examinations.</li> <li>• Passed advanced police driving course.</li> <li>• Completed all necessary eLearning.</li> <li>• Demonstrate ability to perform key elements of the role successfully and competently.</li> </ul> |

## Structure



## PART B – COMPETENCIES & VALUES

### Competency and Values Framework –

[http://www.college.police.uk/What-we-do/Development/competency-and-values-framework/Documents/Competency-and-Values-Framework-for-Policing\\_4.11.16.pdf](http://www.college.police.uk/What-we-do/Development/competency-and-values-framework/Documents/Competency-and-Values-Framework-for-Policing_4.11.16.pdf)

Level 1 - Practitioner

## PART C - DEVELOPMENT OF ROLE

### Expertise in Role (Advanced - Level 3)

- Demonstrated competence in all areas detailed in level 2 to progress to the FCI Advanced level role profile.

## PART D - ACCESS & VETTING

|  |  |
|--|--|
| <b>Standard IT Access</b>                          | Default  |
| <b>Police Building (Perimeter and Zone access)</b> | Perimeter Access to Police Buildings where based |
| <b>Vetting Level</b>                               | Management Vetting                               |
| <b>Date accepted as a role profile</b>             | 29/11/18   |