



<b>Role Title</b>	Senior Crime Scene Investigator	<b>Reporting to</b>	Crime Scene Investigator Supervisor
<b>Section</b>	Crime Scene Investigation	<b>District/Department</b>	Regional Scientific Support Services
<b>Tenure</b>		<b>Rank/Grade</b>	Scale 6 - SO1

## Part A – JOB DESCRIPTION

<b>Overall purpose of role</b>	To provide a comprehensive, efficient and effective crime scene examination service to police investigations by attending crime scenes and other incidents of any type.
--------------------------------	---

<b>Key outputs for role –</b>
<ol style="list-style-type: none"><li>1. Lead by example and behave in line with the Police Code of Ethics ensuring that the force values and behavioural expectations are clearly understood and considered by managers, officers and staff in their decision making and actions; reinforcing and influencing them through all interactions and processes.</li><li>2. Prepare for operational deployment to incidents in line with departmental procedures, checking vehicle, consumables, operational equipment is ready for use and interrogating relevant force systems to assist in the crime scene examination process.</li><li>3. Attend incidents and scenes of crime, during attendance communicate with members of the public, complainants or victims, often when they are distressed or potentially hostile, in an attempt to establish the circumstances, or a sequence of events.</li><li>4. Attending both volume and serious/major crime scenes utilise the information available in the request and from people in attendance to develop a scene examination/ evidence recovery strategy that meets the investigative requirements.</li><li>5. Record, recover and package digital imaging evidence, primary identification evidence, trace evidence and artefacts from scenes in line with the determined recovery strategy, identifying the correct techniques and sequence of examination to maximise the forensic potential that exists within the scene, avoiding loss of evidence or contamination.</li><li>6. Produce accurate and comprehensive scene examination reports in line with departmental protocols, and update information onto the RSS case management and other force systems as required.</li><li>7. Produce criminal justice statements detailing the examination completed and evidence recovered, and where required attend coroners, magistrates and crown court to give evidence as a professional witness.</li><li>8. Attend scenes as required and deliver all or part of a structured scene examination strategy (this could be any crime type where the examination requirements are within the competency requirements of the role or individual), where these requirements cannot be delivered, advise the instructing officer for the strategy to be re-evaluated.</li><li>9. Provide specialist advice to colleagues and police officers on scene preservation, examination requirements and techniques, and exhibit packaging and submission to ensure forensic opportunities are maximised at any scene.</li><li>10. Support and engage in the relevant quality management system/s to ensure organisational conformance with the standards required by the Forensic regulator.</li></ol>

<b>Dimensions</b> (Financial/Statistical/Mandates/Constraints/No. of direct reports)
<ul style="list-style-type: none"><li>• The Senior CSI role provides a service to all crime types, although this will predominantly be volume crime there are a significant number of occasions where the post holder will attend serious crime unsupervised and major crime as part of a team.</li><li>• This role contributes to the total number of scenes attended per year by the CSI Unit of about 55,000</li></ul>

**Work/Business contacts**

**Internal:** All Divisions and Departments with Officers and staff at all ranks and grades.

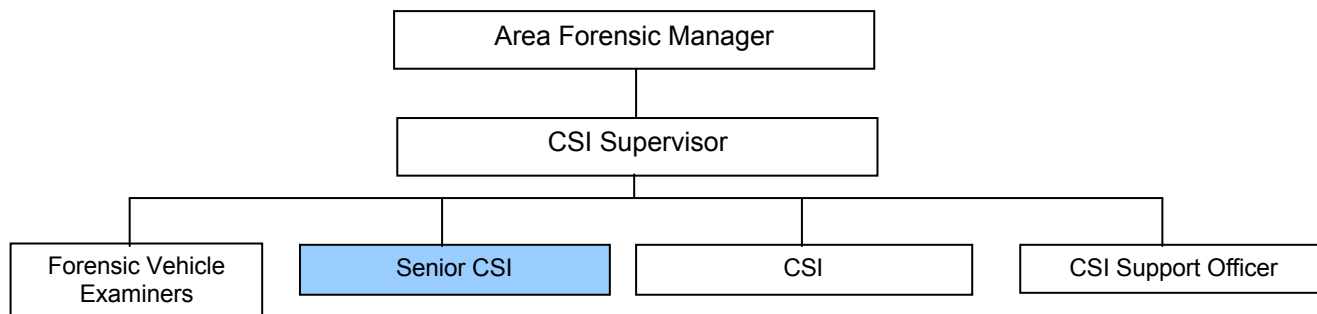
**External:** Members of the public (including witness, victims, suspects and offenders). Pathologists, NHS and force medical examiners, forensic scientists, members of the fire service, ambulance service, customs and excise, the military, health and safety executive members, prison staff and CPS are often encountered during more serious or complex enquiries in both a support role, as well as exchanging information..

<b>Expertise in Role Required (At selection - Level 1)</b>	<b>Essential or Desirable</b>
<ul style="list-style-type: none"><li>Science based degree or equivalent practical experience in a relevant operational environment.</li></ul>	Essential
<ul style="list-style-type: none"><li>Detailed knowledge of practical application of forensic science.</li></ul>	Desirable
<ul style="list-style-type: none"><li>Basic knowledge of and ability to operate computer packages including casework management systems, crime systems Excel and Word</li></ul>	Essential
<ul style="list-style-type: none"><li>Can demonstrate good communication skills and an aptitude for working in a diverse community</li></ul>	Essential
<ul style="list-style-type: none"><li>Demonstrated understanding of H&amp;S issues and legislation relevant to crime scene examination and attendance</li></ul>	Essential
<ul style="list-style-type: none"><li>Demonstrated competence and performance in attending and examining crime scenes as defined by the CSI National Occupational Standards</li></ul>	Essential
<ul style="list-style-type: none"><li>Demonstrated knowledge of the practical techniques used to examine serious and major crime scenes and understanding of the investigative response to such incidents</li></ul>	Essential
<ul style="list-style-type: none"><li>Due to the nature of the role, must provide Biometric samples (fingerprints and DNA) for inclusion on the respective Police Elimination Databases for routine speculative searching purposes</li></ul>	Essential
<b>Other (Physical, mobility, local conditions)</b>	
<ul style="list-style-type: none"><li>Full current UK/European driving licence.</li></ul>	Essential
<ul style="list-style-type: none"><li>Ability to deal with the effects of crime, this can range from dealing appropriately with distressed victims through to the impact on individuals of scenes of extreme violence.</li></ul>	Essential
<ul style="list-style-type: none"><li>Equitable contribution to the designated shift pattern covering a 24hr period 7 days per week.</li></ul>	Essential
<ul style="list-style-type: none"><li>Is able to complete a recognised manual handling course</li></ul>	Essential
<ul style="list-style-type: none"><li>Flexible approach to working cross-border to ensure a full regional crime scene investigation service</li></ul>	Essential

**Expertise in Role - After initial development - Level 2**

- Awareness of West Yorkshire Police structures, processes and procedures.
- Proven awareness of the RSS/CSI processes, policies and working practice guidelines.
- Proven ability to use all available equipment including those at serious/major crime scenes
- Successful completion in serious major crime training course.
- Has developed the ability to make decisions at the scenes they attend, and interpret offender behaviour.
- Continued to update themselves on developments, changes and advances in crime scene examination and recording techniques.
- Have become familiar with the geographical locations within the West Yorkshire Police area.
- Proven ability to work in challenging environments where weather conditions, hygiene and exposure to potentially hazards substances (including bodily fluids and bodies) can place additional pressure on an individual's ability to complete the requirements of a scene examination.

## Structure



## PART B – COMPETENCIES & VALUES

### Competency and Values Framework –

[http://www.college.police.uk/What-we-do/Development/competency-and-values-framework/Documents/Competency-and-Values-Framework-for-Policing\\_4.11.16.pdf](http://www.college.police.uk/What-we-do/Development/competency-and-values-framework/Documents/Competency-and-Values-Framework-for-Policing_4.11.16.pdf)

Level 1 - Practitioner

## PART C - DEVELOPMENT OF ROLE

### Expertise in Role (Advanced - Level 3)

- Has demonstrated ability to develop in one of the CSI Unit specialist skill area's – Digital Imaging, DNA Search and recovery, CBRN/ Chemical Hazards, Arson/ explosions/ Forensic Archaeology/ entomology
- Demonstrated ability to fulfil the role of acting CSI Supervisor
- Contribute to the delivery of training to new staff and briefings/ training sessions to a wider force audience

## PART D - ACCESS & VETTING

<b>Standard IT Access</b>	Default
<b>Police Building (Perimeter and Zone access)</b>	Perimeter Access to Police Buildings where based
<b>Vetting Level</b>	Recruitment Vetting
<b>Date accepted as a role profile</b>	2016