



Role Title	Police Community Support Officer	Reporting to	Neighbourhood Policing Team Sergeant
Section	Neighbourhood Policing Team	District/Department	Districts
Tenure		Rank/Grade	Scale 4

Part A – JOB DESCRIPTION

Overall purpose of role	To contribute to the policing of neighbourhoods primarily through highly visible patrols, with the purpose of: reassuring the public, tackling anti-social behaviour in public places and being accessible to communities and partner agencies working at a local level.
--------------------------------	--

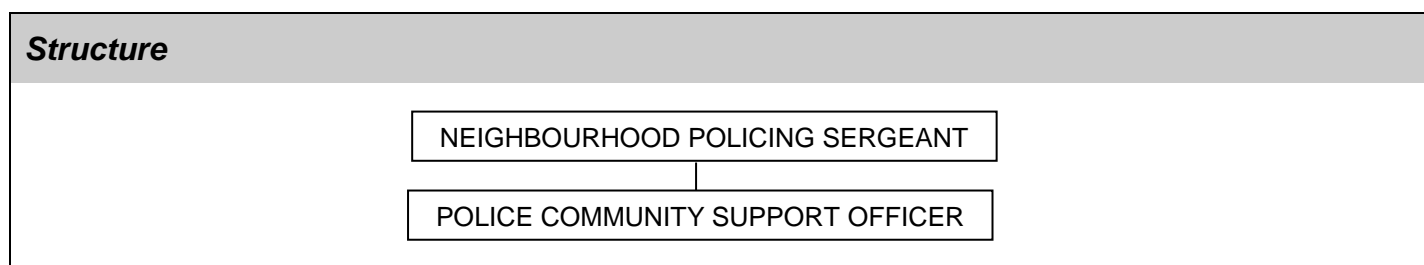
Key outputs for role –
<ol style="list-style-type: none">1. Lead by example and behave in line with the Police Code of Ethics ensuring that the force values and behavioural expectations are clearly understood and considered by managers, officers and staff in their decision making and actions; reinforcing and influencing them through all interactions and processes.2. Maintain a highly visible presence and be accessible in a given area at appropriate times, to maintain high levels of community confidence and reassurance.3. Engage in targeted patrol and use powers as necessary, to prevent and deter instances of nuisance, anti-social behaviour and criminality.4. Assist police officers to take control of incidents and undertake enquiries in relation to specified incidents in line with the PCSO Deployment Policy, to assist in the detection and prevention of crime.5. Gather and record relevant community intelligence to support policing objectives and offender management6. Adopt a problem orientated approach to achieve sustainable solutions to community problems and work towards meeting agreed priorities, by being deployed through joint partnership tasking initiatives.7. Attend court when required, to give evidence in accordance with legislation to aid prosecution and conviction of offenders.

Dimensions (Financial/Statistical/Mandates/Constraints/No. of direct reports)
<ul style="list-style-type: none">• Extensive contact with the public• Regularly attend and participate in Community Contact Points.• In line with the Police Reform Act 2002, granting PCSOs traffic warden powers requires their official designation to be 'Traffic Warden with PCSO powers'. That applies in WYP, although the working role title for all operational purposes remains Police Community Support Officer.

Work/Business contacts
Internal: All ranks of Police Officers and Police Staff within West Yorkshire Police
External: Members of the general public and partner agencies e.g. Local Authority, Schools

Expertise in Role Required (At selection - Level 1)	Essential or Desirable
• Basic knowledge of and the ability to operate computer packages e.g. Microsoft office	Essential
• Ability to pass the relevant assessment centre	Essential
• Demonstrates a basic understanding of community issues	Essential
• Displays an awareness of the roles of other agencies/groups and how they impact on social issues	Desirable
• Basic knowledge of the geographical Force area.	Desirable
Other (Physical, mobility, local conditions)	
• Ability to pass an appropriate medical.	Essential
• Required to work all weather patrols.	Essential
• Requirement to work at various locations throughout the Force where necessary	Essential

Expertise in Role - After initial development - Level 2
• Demonstrates an understanding of local policing issues
• Basic knowledge of relevant legislation, policies, protocols and Codes of Practice
• Basic knowledge of the geography/demography of the Division.
• Completion of Police Community Support Officer training package.



PART B – COMPETENCIES & VALUES

Competency and Values Framework – http://www.college.police.uk/What-we-do/Development/competency-and-values-framework/Documents/Competency-and-Values-Framework-for-Policing_4.11.16.pdf
Level 1 –Practitioner

PART C - DEVELOPMENT OF ROLE

Expertise in Role (Advanced - Level 3)
• Detailed knowledge of geography/demography of division.
• Detailed knowledge of relevant legislation, policies, protocols and codes of practice.

PART D - ACCESS & VETTING

Standard IT Access	Default
Police Building (Perimeter and Zone access)	Perimeter Access to Police Buildings where based
Vetting Level	Recruitment Vetting
Date accepted as a role profile	2016